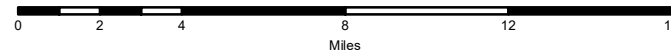


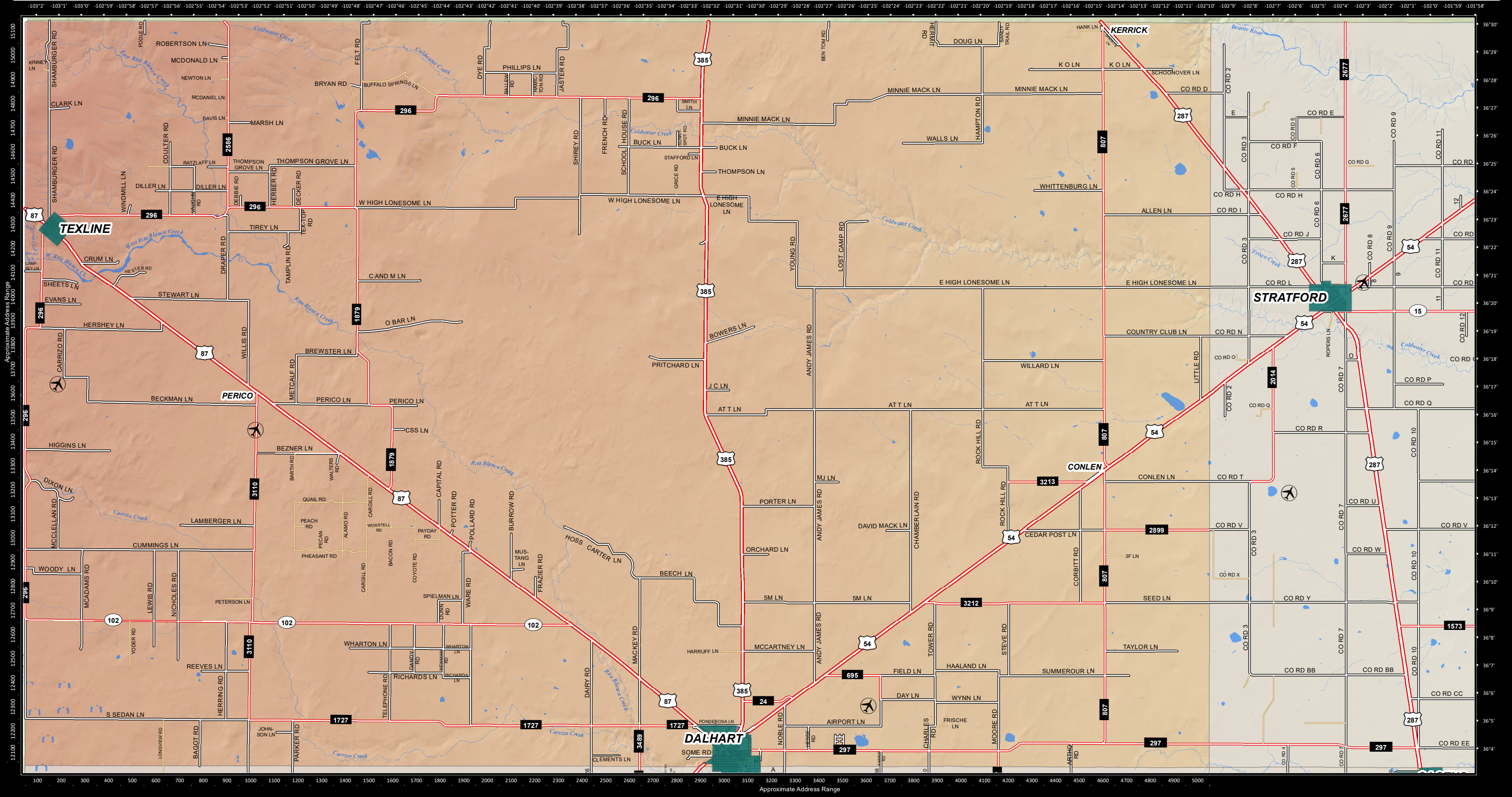
Dallam County, Texas General Roads Map

- Interstate
- State Highway
- County Roads
- Private Roads
- US Highway
- FM Road
- Civic Roads
- Minor Cnty Rds



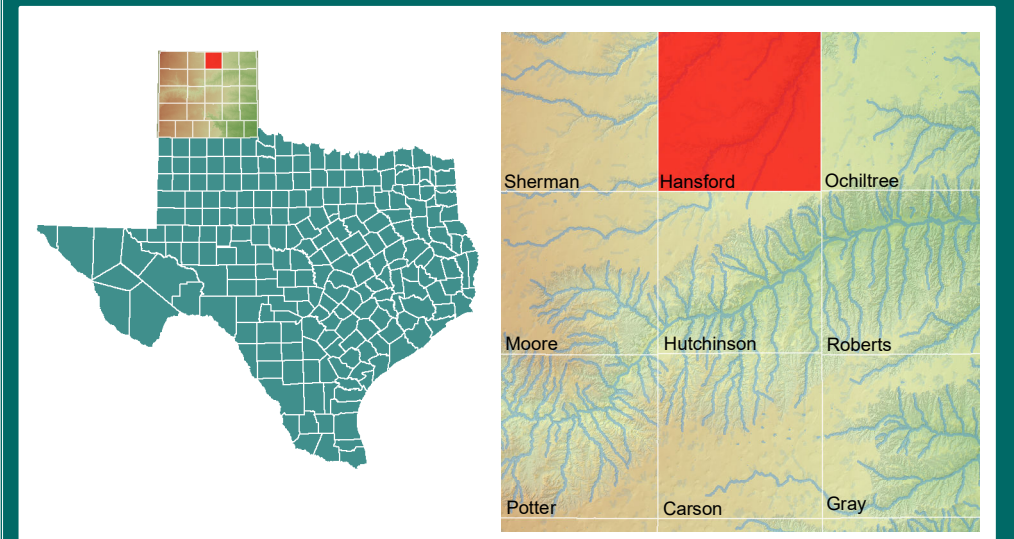
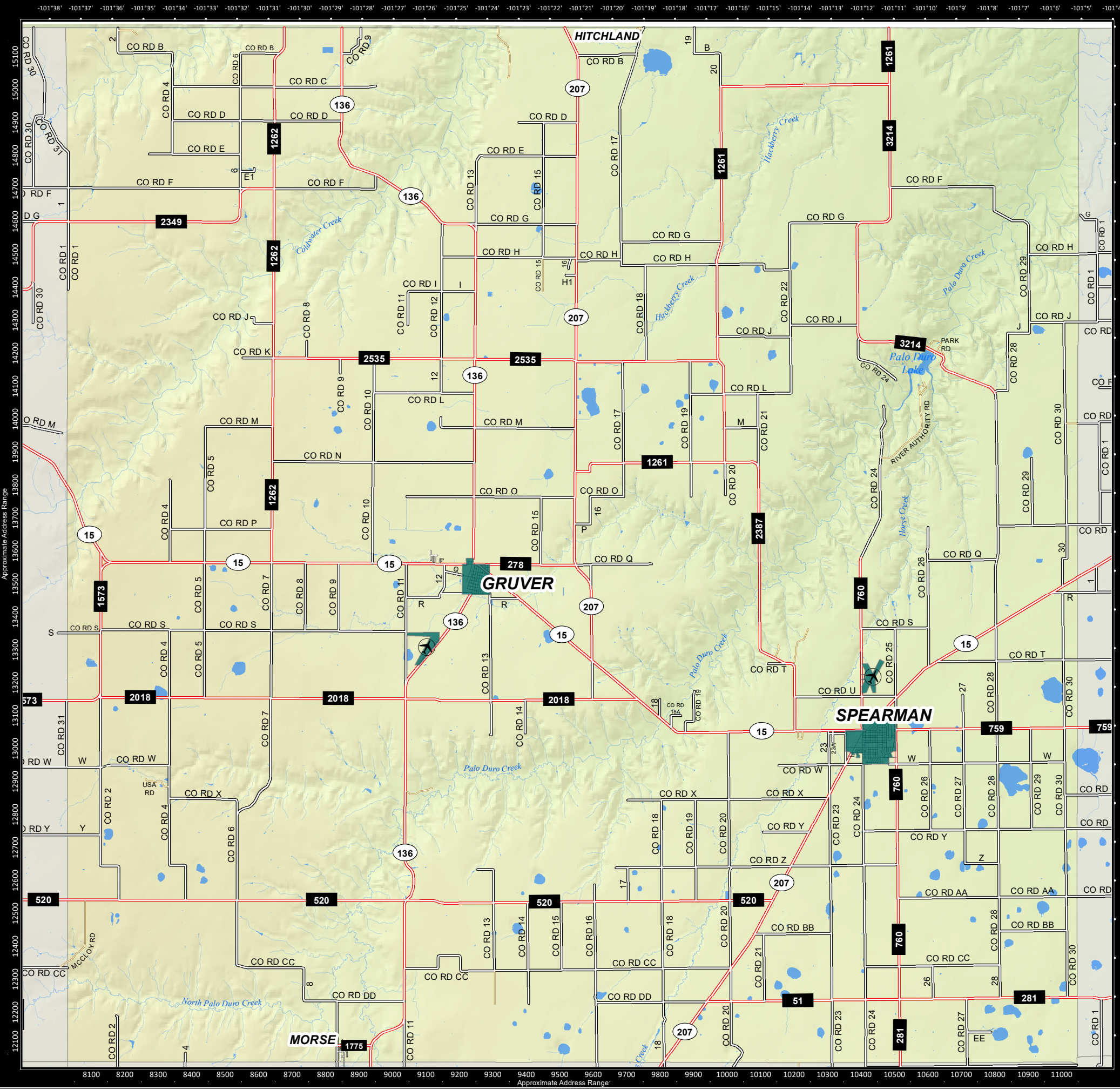
This map is produced to aid emergency service providers in locating 9-1-1 calls. The information on the map, having been obtained from a variety of sources, is believed to be accurate. Please report corrections, omissions and changes to the Panhandle Regional Planning Commission's 9-1-1 network at www.panhandlemaps.com

This product is for informational purposes and may not have been prepared for or be suitable for legal, engineering, or surveying purposes. It does not represent an on-the-ground survey and represents only the approximate relative location of property boundaries.

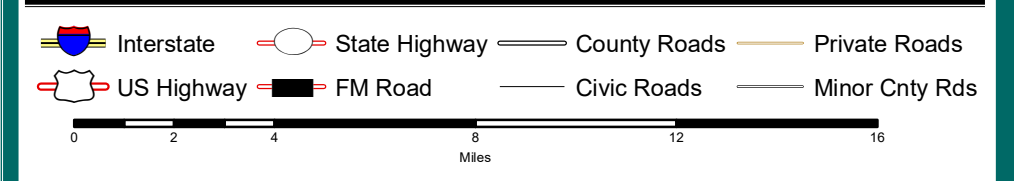


Approximate Address Range
12100 12200 12300 12400 12500 12600 12700 12800 12900 13000 13100 13200 13300 13400 13500 13600 13700 13800 13900 14000 14100 14200 14300 14400 14500 14600 14700 14800 14900 15000 15100

Approximate Address Range



Hansford County, Texas General Roads Map

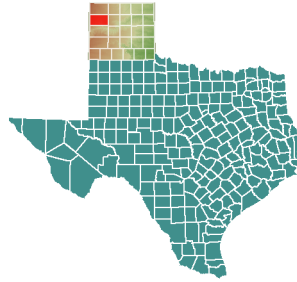
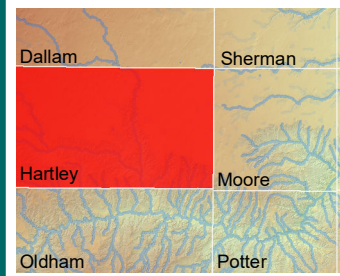


This map is produced to aid emergency service providers in locating 9-1-1 calls. The information on the map, having been obtained from a variety of sources, is believed to be accurate. Please report corrections, omissions and changes to the Panhandle Regional Planning Commission's 9-1-1 network at www.panhandlemaps.com

This product is for informational purposes and may not have been prepared for or be suitable for legal, engineering, or surveying purposes. It does not represent an on-the-ground survey and represents only the approximate relative location of property boundaries.

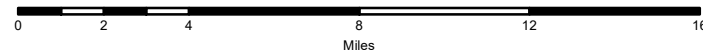
PANHANDLE REGIONAL PLANNING COMMISSION

Panhandle Regional
CALL 9-1-1
EMERGENCY
9-1-1 Network



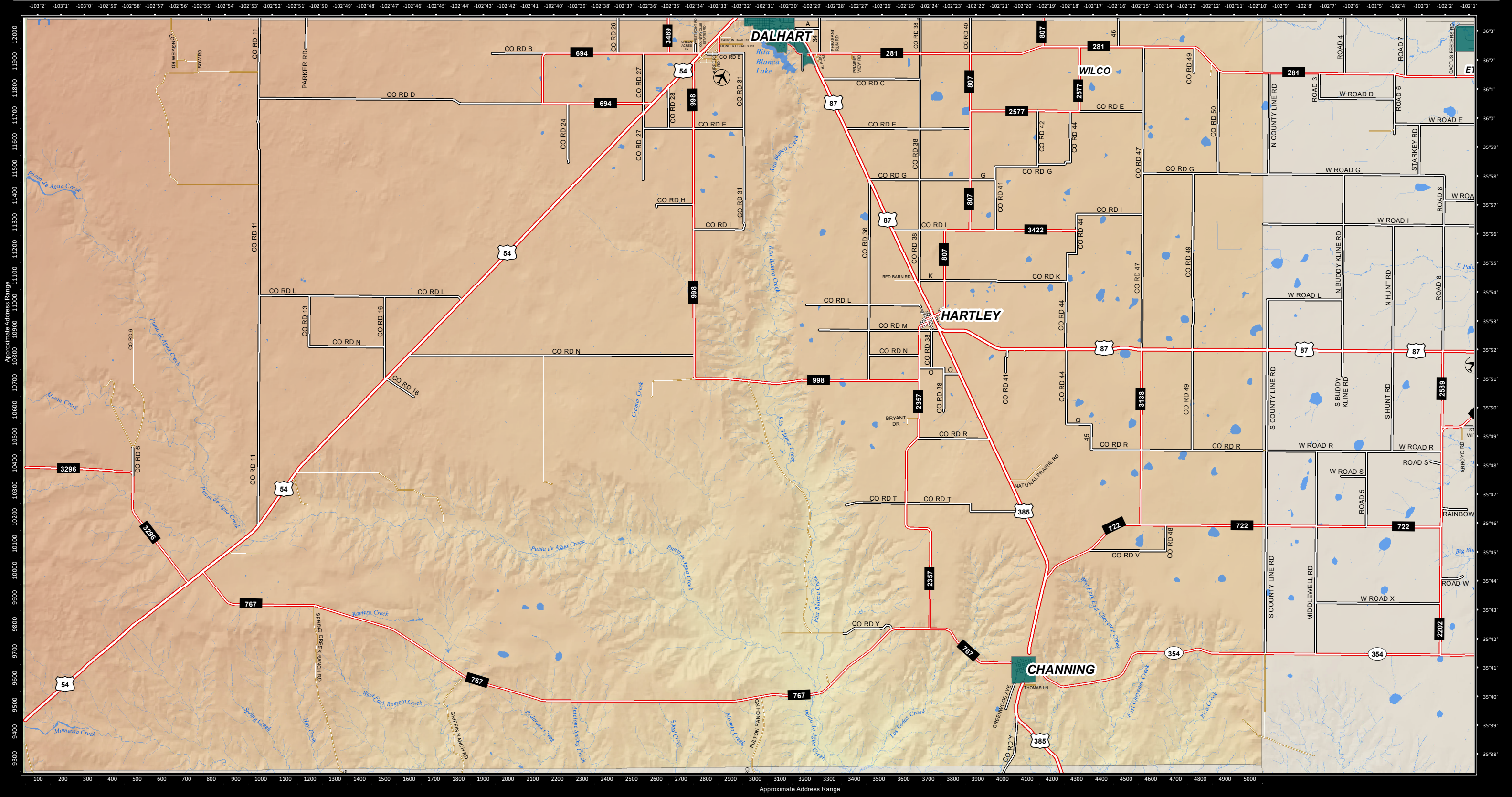
Hartley County, Texas General Roads Map

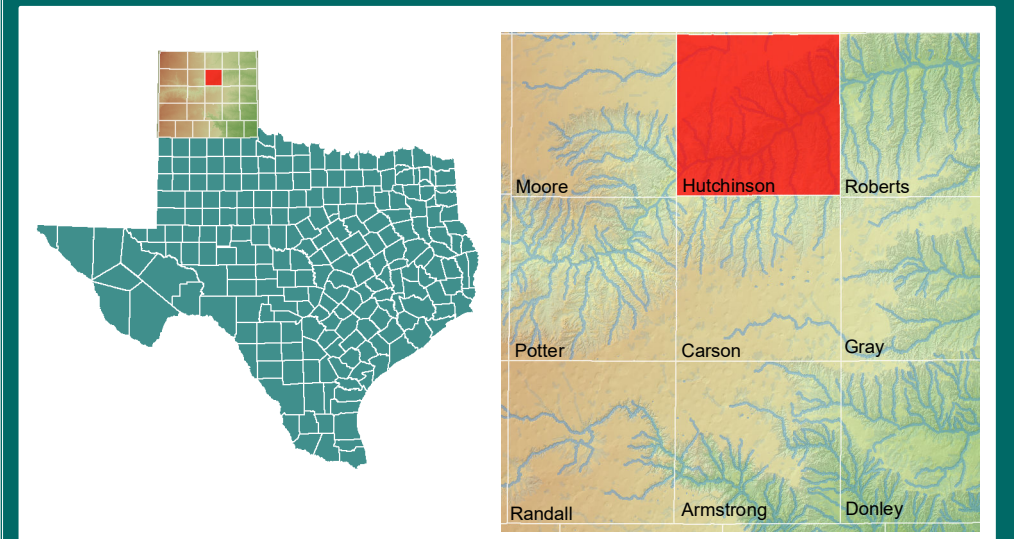
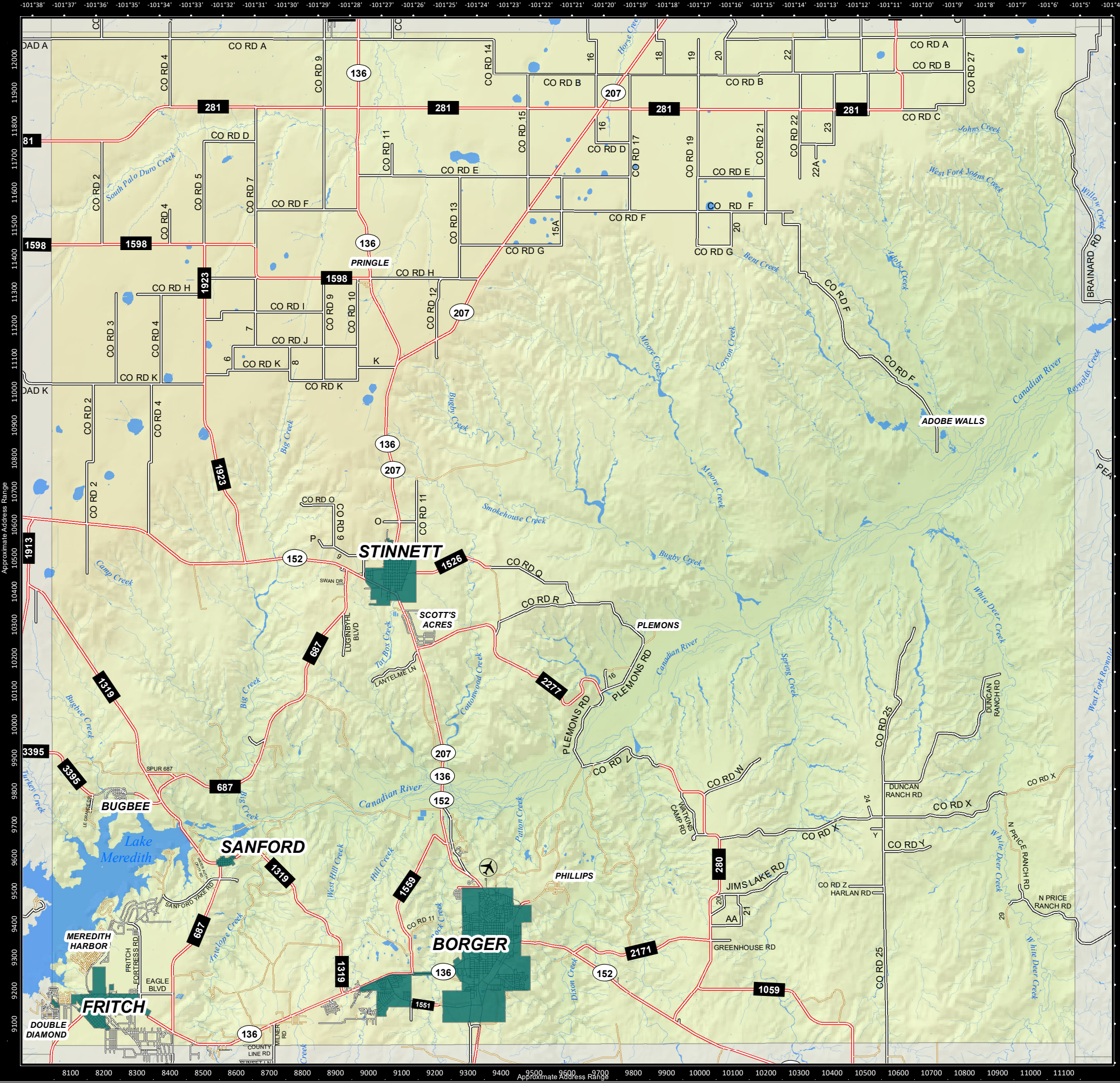
- Interstate
- State Highway
- County Roads
- Private Roads
- US Highway
- FM Road
- Civic Roads
- Minor Cnty Rds



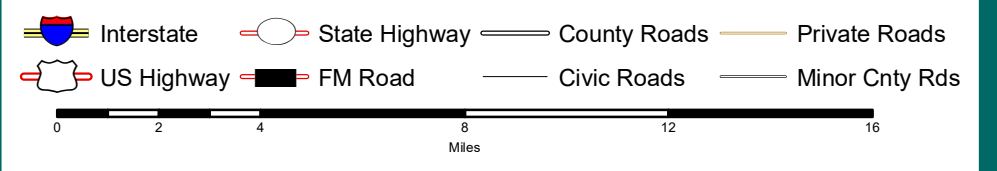
This map is produced to aid emergency service providers in locating 9-1-1 calls. The information on the map, having been obtained from a variety of sources, is believed to be accurate. Please report corrections, omissions and changes to the Panhandle Regional Planning Commission's 9-1-1 network at www.panhandlemaps.com.

This product is for informational purposes and may not have been prepared for or be suitable for legal, engineering, or surveying purposes. It does not represent an on-the-ground survey and represents only the approximate relative location of property boundaries.



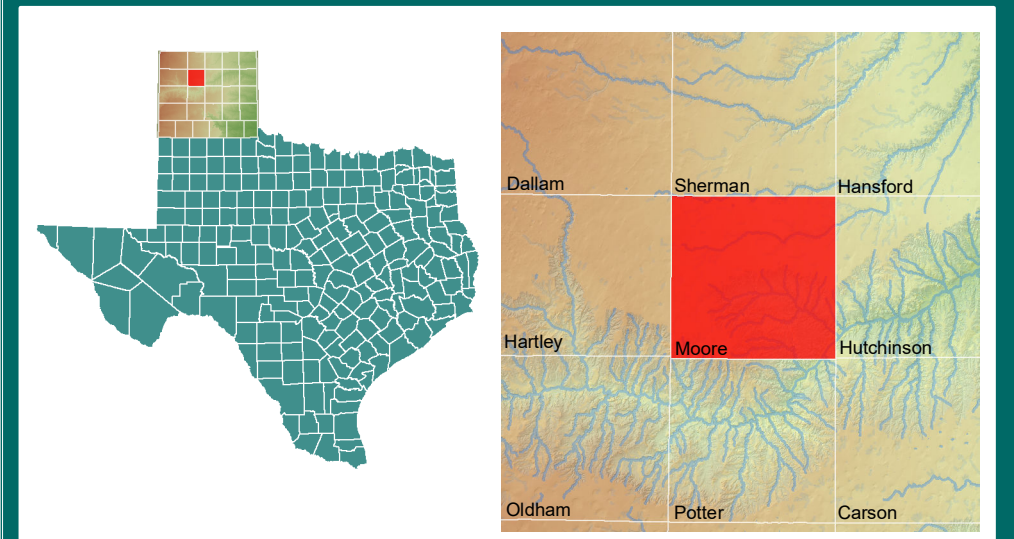
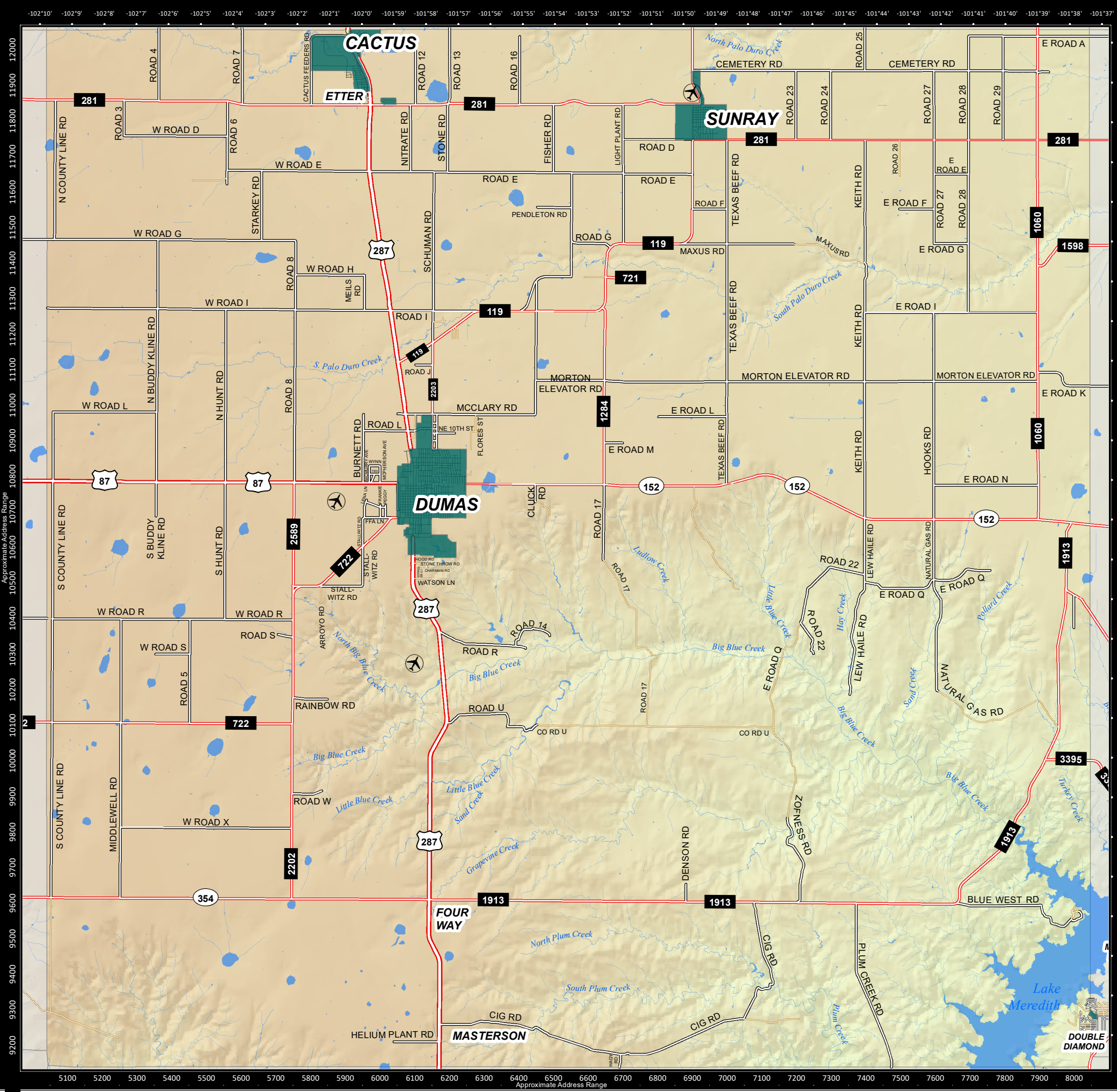


Hutchinson County, Texas General Roads Map

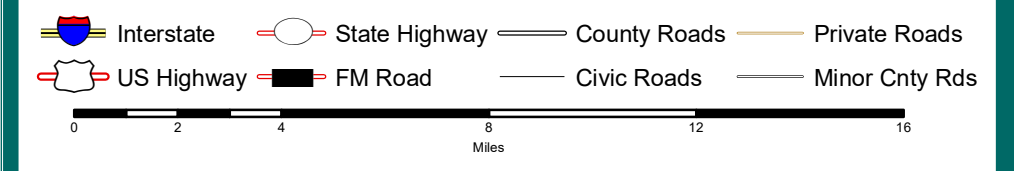


This map is produced to aid emergency service providers in locating 9-1-1 calls. The information on the map, having been obtained from a variety of sources, is believed to be accurate. Please report corrections, omissions and changes to the Panhandle Regional Planning Commission's 9-1-1 network at www.panhandlemaps.com

This product is for informational purposes and may not have been prepared for or be suitable for legal, engineering, or surveying purposes. It does not represent an on-the-ground survey and represents only the approximate relative location of property boundaries.

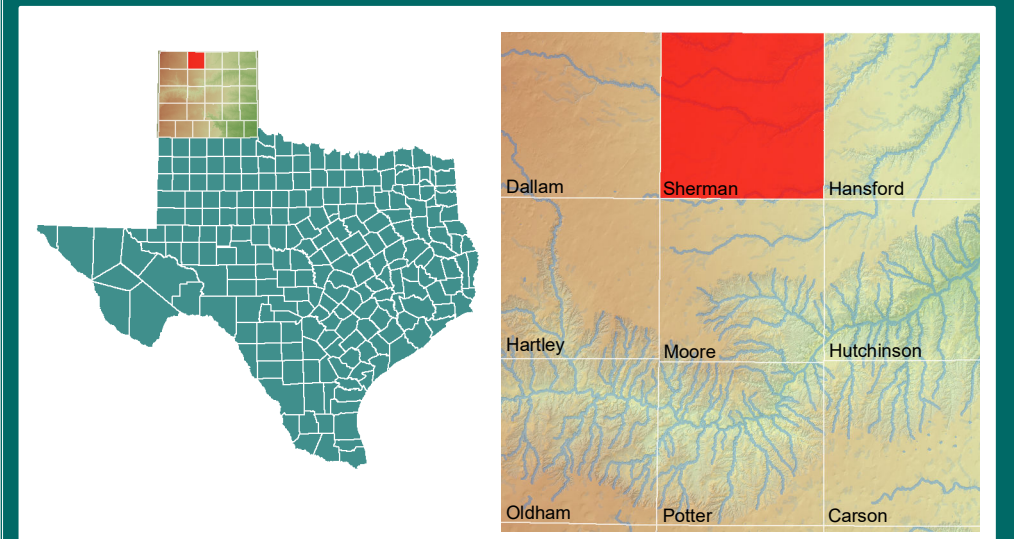
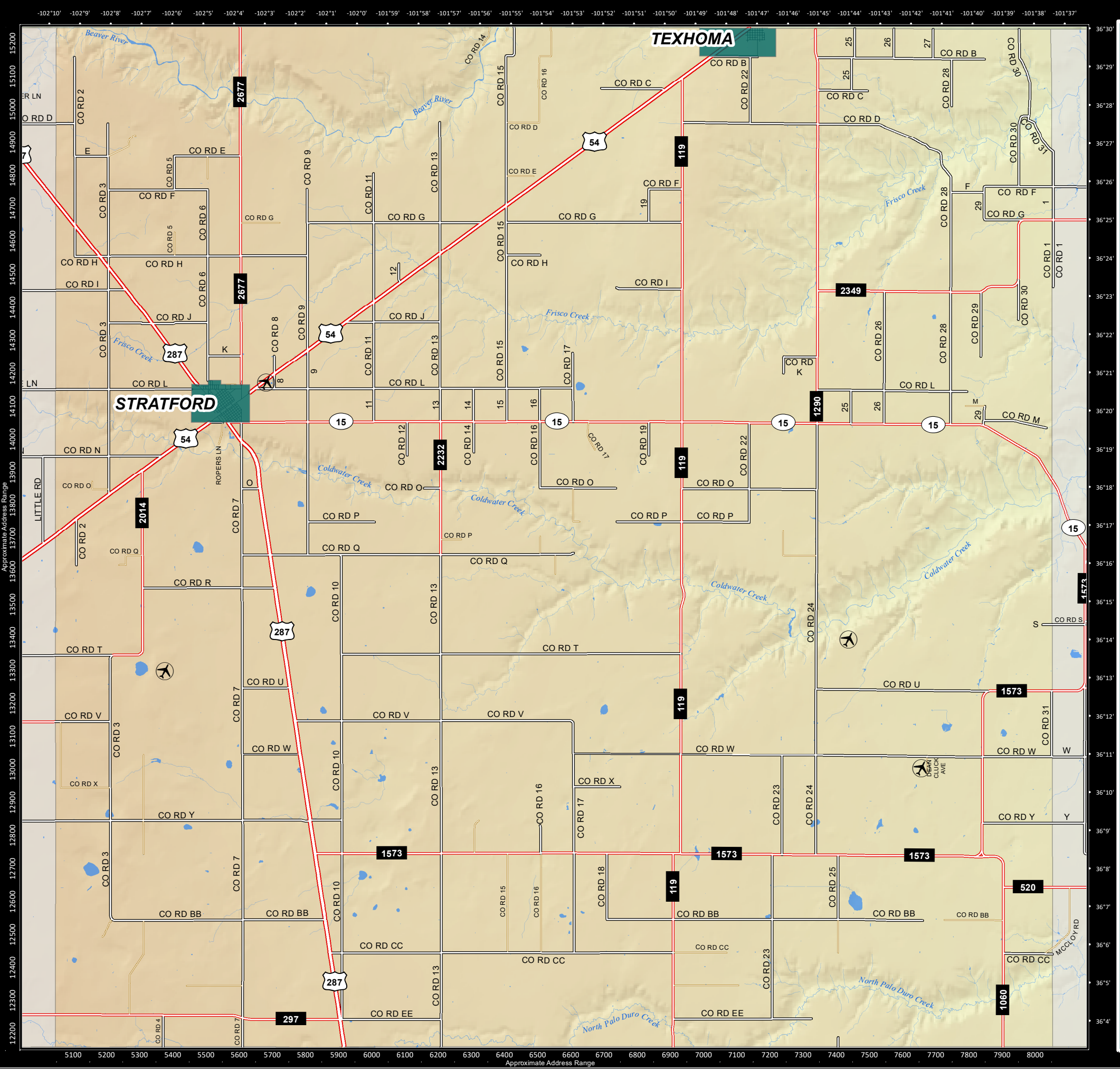


Moore County, Texas General Roads Map

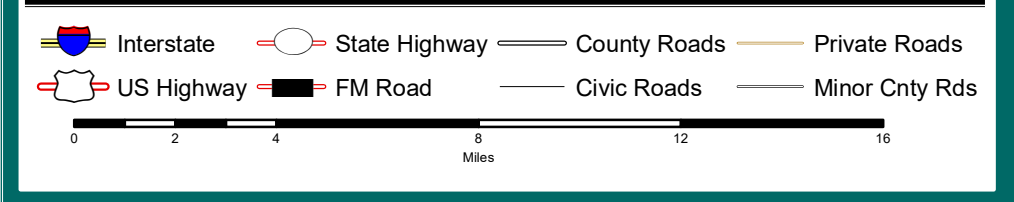


This map is produced to aid emergency service providers in locating 9-1-1 calls. The information on the map, having been obtained from a variety of sources, is believed to be accurate. Please report corrections, omissions and changes to the Panhandle Regional Planning Commission's 9-1-1 network at www.panhandlemaps.com

*This product is for informational purposes and may not have been prepared for or be suitable for legal, engineering, or surveying purposes. It does not represent an on-the-ground survey and represents only the approximate relative location of property boundaries. *



Sherman County, Texas General Roads Map



This map is produced to aid emergency service providers in locating 9-1-1 calls. The information on the map, having been obtained from a variety of sources, is believed to be accurate. Please report corrections, omissions and changes to the Panhandle Regional Planning Commission's 9-1-1 network at www.panhandlemaps.com

This product is for informational purposes and may not have been prepared for or be suitable for legal, engineering, or surveying purposes. It does not represent an on-the-ground survey and represents only the approximate relative location of property boundaries.



